



www.intsiapharma.com

TRUST IS BUILT WITH CONSISTENCY



ABOUT US

INTSIA PHARMA PRIVATE LIMITED is a pharmaceutical firm established in Chennai, Tamilnadu, India. This journey, the brainchild of Subject Matter Experts with extensive expertise in the pharmaceutical industry, began operations in 2019. Ours is a trusted firm established with a clear objective of focusing on the needs of patients by providing Standard Pharmaceutical Products in many segments. With an extensive portfolio of branded drugs, it covers all of the major therapeutic drugs for the treatment of Anti-Diabetic and Cardiovascular diseases, Women's health Respiratory Agents, drugs against Bacterial and Fungal Infections, Urological medicinal products, drugs for the treatment of the Central Nervous System Analgesics, and Gastrointestinal medicinal products.

OUR MISSION

We will be one of the world's most reputable pharmaceutical companies, with consistent supply. On-time fulfilment of consumer requirements.

FURNISHING THE ACTUAL

We do have spare capacity to manufacture higher volumes in various sectors and dosage forms.

COMPETITIVE PRICE

Products will be delivered at competitive prices based on volume and long-term association.

GLOBAL EXPORT

Enhancing our entire range of product portfolio to international markets within a span of time.

TRUST IS BUILT WITH CONSISTENCY - Our SME's will assure the supply consistency by adhering to SOP's & cGMP quality systems, in addition to "Meeting the specifications at every stage from input Material to Finished Dosage Products"



**"Pharmaceutical Company Holding Trusted Brand In
DOMESTIC & INTERNATIONAL
Markets"**

FOR **EMPIRICAL TREATMENT** IN
IV THERAPY RECOMMEND



Rx
PrimazoneTM **1g**
Ceftriaxone 1000mg Injection

FORMULATED TO CONQUER AGAINST
STUBBORN PATHOGENS

Rx
PrimazoneTM **1g**
Ceftriaxone 1000mg Injection

CEFTRIAXONE

- Parenteral Third Generation Cephalosporin First choice for Empiric Antimicrobial Therapy
- Promises synergetic action of bactericidal Ceftriaxone and Beta Lactamase inhibitor Tazobactam
- Meningitis - Respiratory Tract Infections
- Pneumonia - Urinary Tract Infections
- Septicemia - Post Surgical Infections
- Bacteremia - Gynaecological Infections
- Enteric Fever - Prophylaxis for Surgery

- In Bacterial Infections
- Bone & Joint Disease
- RTI, Gynecological Infections
- Surgical Infections

A **SAFEGUARD** AGAINST
INFECTIONS..



Rx
PrimazoneTM **SB**
Ceftriaxone 1000mg + Sulbactam 500mg Injection

A TOUGH **LIFE SAVER**

Rx
PrimazoneTM **SB**
Ceftriaxone 1000mg + Sulbactam 500mg Injection

CEFTRIAXONE

- Third generation cephalosporin antibiotic
- It has stability against degradation by beta-lactamase
- Broad spectrum coverage against gram -ve organisms

SULBACTAM

- Decreases the MIC values of organisms susceptible to Ceftriaxone due to increased affinity to PBPs
- It inhibits - lactamase produced by bacteria & protects ceftriaxone

- Respiratory Tract Infections
- Skin & Soft Tissue Infections
- Bone & Joint Infections
- Pelvic Inflammatory Infections
- UTI & Intra - Abdominal Infections

intsia[®]
PHARMA

POWERFUL STROKE AGAINST TYPICAL TARGET



Rx
PrimazoneTM TZB
Ceftriaxone 1000mg + Tazobactam 125mg Injection

A TOUGH **LIFE SAVER**

Rx
PrimazoneTM TZB
Ceftriaxone 1000mg + Tazobactam 125mg Injection

CEFTRIAXONE

- High degree of stability against beta lactamases (Both Penicilins And Cephalosporins) produced by both gram +ve & gram -ve microbes
- Superior to other antibiotic in preventing both local & remote Post operative infections

TAZOBACTAM

- A Penicilin acid sulfone derivative with B-lactamase inhibitory properties
- Enhances the activity of B-lactam antibacterials

- Septicemia
- Meningitis
- Surgical Prophylaxis
- Nosocomial Infections
- Urinary Tract Infections / Bone & Joint Infections

OPT FOR THE **RIGHT** THERAPY **IN GERD**



OD-Rab-DSRTM
Rabeprazole 20mg (ER) + Domperidone 30mg (SR) Capsules

FASTER ACTION AND FASTER RELIEF

OD-Rab-DSRTM

Rabeprazole 20mg (ER) + Domperidone 30mg (SR) Capsules

RABEPRAZOLE

- Potent inhibitor of gastric acid
- Ensures greater potency & rapid onset of maximal acid suppression than other PPIs
- Reduces the frequency and Severity of Heart Burn

DOMPERIDONE

- Strengthens the Anti-Reflux mechanism
- Speeds up the emptying of Stomach
- Eliminates the Nausea & Vomiting associated with GERD

- Chronic Gastritis
- GERD
- Heart Burn
- Dyspepsia
- Duodenal Ulcer

HIGHLY EFFECTIVE IN
DRY COUGH AND
NON PRODUCTIVE COUGH



DexiTOP-DXTM
Dextromethorphan Hydrobromide and Chlorpheniramine Maleate Syrup **Cough Syrup**

SMOOTHING THE
RESPIRATORY AIRWAY

DexiTOP-DXTM
Dextromethorphan Hydrobromide and Chlorpheniramine Maleate Syrup **Cough Syrup**

DEXTROMETHORPHAN

- Dextromethorphan is a cough suppressant
- It affects the signals in the brain that trigger cough reflex

CHLORPHENIRAMINE

- It helps dry up some body fluids to relieve symptoms such as watery eyes and runny nose
 - Bronchitis
 - Pulmonary Disorders
 - Chest Congestion
 - Acute & Chronic Cough

- Rhinitis
- Acute Coryza
- Rhinorrhoea
- Vasomotor
- Nasal Congestion

SAFE AND EFFECTIVE FOR
MUCOLYTIC AND
PRODUCTIVE COUGH



AmbroTOP-LSTM
Levosalbutamol Sulphate, Ambroxol Hydrochloride and Guaiphenesin Syrup **Cough Syrup**

TRIPLE ACTION EXPECTORANT

AmbroTOP-LSTM

Levosalbutamol Sulphate, Ambroxol Hydrochloride and Guaiphenesin Syrup **Cough Syrup**

LEVOSALBUTAMOL

- Fast acting bronchodilator, Ensure comfortable breathing

GUAIPHENESIN

- Reduces viscosity of sputum, Expectorant
- Breaks mucus, fast expulsion, Ensure mucociliary clearance

AMBROXOL HCL

- Mucolytic Agent
- Augment Antibiotic penetration

- Loosen Mucus
- Soothing Effect
- Clear Bronchial Congestion
- Phlegm
- Asthmatic Cough

WHEN
NUTRITION
 NEEDED FOR HAPPY LIFE



V3 ACTIVE™
 Multi-vitamin, Multi-mineral with Grape Seed Extract Tablets

THE COMPLETE **NUTRITION**

Ensures Absorption & Assimilation
 of Essential Minerals

V3 ACTIVE™

Multi-vitamin, Multi-mineral with Grape Seed Extract Tablets



Nutritional Information (Approximate Values)		
Each serving of one coated tablet contains	% of RDA*	
Energy	3 kcal	
Carbohydrate	0.2 g	
Protein	0.0 g	
*Fat	0.0 g	
Vitamin C	40 mg	100
Vitamin B3	12 mg	100
Vitamin E	8 mg	**
Vitamin B5	3 mg	**
Vitamin B2	1.1 mg	100
Vitamin B1	1 mg	100
Vitamin B6	1 mg	50
Vitamin A	2000 IU	100
Folic Acid	140 mcg	100
Biotin	150 mcg*	**
Vitamin B12	1 mcg	100
Vitamin D3	200 IU	**
Zinc Sulphate	9 mg	**
Magnesium Sulphate	3 mg	**
Manganese Sulphate	250 mg	**
Potassium Iodide	100 mcg	**
Copper Sulphate	30 mg	**
Sodium Selenite	30 mcg	**
Chromium Picolinate	25 mcg	**
Grape Seed Extract	50 mg*	**

Recommended usage: Use as a Nutraceutical one tablet daily.



- Improves well being
- Enhances Metabolism
- Relieves Oxidative Stress
- Helps to Boost Immunity



OVERALL WELL BEING VITALITY & ENERGY IMMUNITY BOOSTER



V3 TOTAL™

Multivitamins, Multiminerals with Lycopene, L-Lysine,
Cyanocobalamin & Antioxidants Syrup

A COMPLETE PACKAGE FOR HEALTHY LIFE
HELPS TO BOOST IMMUNITY

Ensures Absorption & Assimilation
of Essential Minerals

V3 TOTAL™

Multivitamins, Multiminerals with Lycopene, L-Lysine,
Cyanocobalamin & Antioxidants Syrup



Benefits of Multivitamin Syrup

- * Rich in Anti oxidants
- * Helps to shine the skin
- * Promotes Growth
- * Helps to gain weight
- * Brings Charm & Removes Fatigue
- * Promotes Smooth & Better Digestion



Ensures Absorption & Assimilation of Essential Minerals

- Improves well being
- Enhances Metabolism
- Relieves oxidative stress
- Helps to Boost Immunity

 **vintsia**[®]
PHARMA

ELIMINATE **ALLERGY**
BREATHE EASY



MonsicTM-LC
Levocetirizine Hydrochloride 5 mg +
Montelukast Sodium 10mg



RAPID **ALLERGY** RELIEF

MonsicTM-LC

Levocetirizine Hydrochloride 5 mg +
Montelukast Sodium 10mg

FAST

LEVOCETIRIZINE HCL

- Most alert Anti-Allergic to block Histamine in the body
In Prophylaxis & treatment of Chronic Asthma in adults
& Pediatrics up to 6 years
- Prevention of exercise induces Broncho constriction

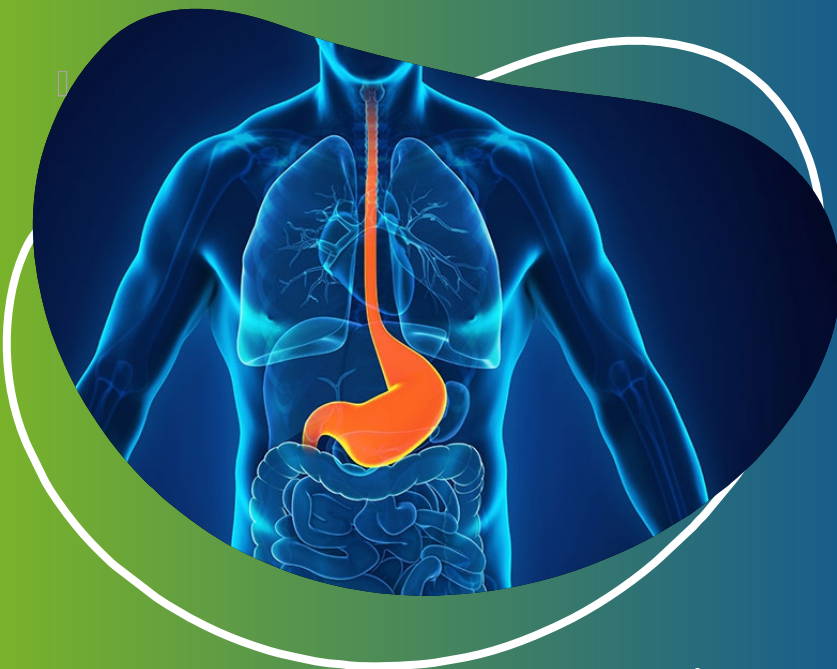
MONTELUKAST SODIUM

- Unique Leukotriene Antagonist (Inhibits Cysteinyl Leukotriene)
- Inhibits Broncho constriction
- Corrects Pathophysiology of Asthma

- Allergic Rhinitis
- Chronic Idiopathic Urticaria
- Prophylaxis & Chronic Treatment
of Asthma

intsia[®]
PHARMA

NORMALIZE **PACE** OF
ACIDITY WITH



Rx **OD-PAN™ 40**
Pantoprazole 40mg

EASE YOUR DIFFICULTY IN **GERD**

Rx **OD-PAN™ 40**

Pantoprazole 40mg

PANTOPRAZOLE

- Superior anti secretory activity than Omeprazole
- Longer Duration of action than Omeprazole, Lansoprazole & Rabeprazole
- Non interference with excretion of other drugs

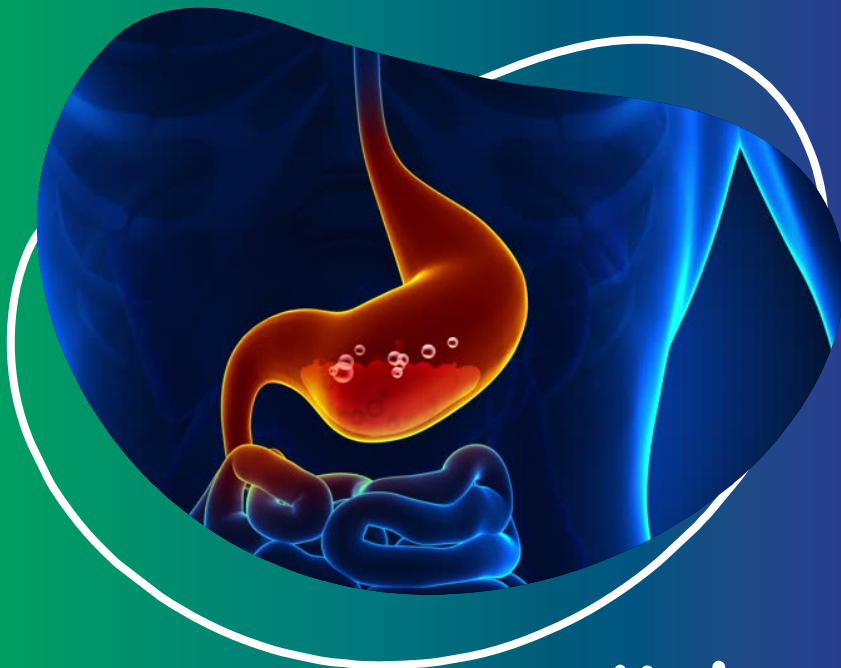
A Superior Choice In Acidic PEPTIC Disease

- Excellent clinical efficiency
- Excellent safety profile
- Least drug interactions
- Better healing rates

- Hyperacidity
- GERD
- Reflex Oesophagitis
- Duodenal Ulcer
- Heartburn

**Speedy
Relief
For
Peaceful Life**

PERFECT PPI AGAINST ACIDITY



Rx
OD-Pan™ DSR
Pantoprazole 40mg + Domperidone 30mg Capsules

COOLS DOWN ACIDITY

Rx
OD-Pan™ DSR
Pantoprazole 40mg + Domperidone 30mg Capsules

PANTOPRAZOLE

- Potent proton pump inhibitor
- Inhibits the H⁺ /K⁺ATPase enzymes (Proton Pump)
- Irreversibly & blocks the final step of acid secretion

DOMPERIDONE

- Potent dopamine receptor (D2) antagonist
- Increases upper esophageal sphincter pressure

- Peptic Ulcer
- GERD
- Dyspepsia
- Duodenal Ulcer
- Heartburn

**Ease Your
Difficulty
in
GERD**

BETTER **RELIEF** FROM
SYMPTOMS
BETTER **QUALITY OF LIFE**



OD-Rab-LSTM
Rabeprazole 20mg + Levosulpride 75mg Tablets

EASE YOUR DIFFICULTY

OD-Rab-LSTM

Rabeprazole 20mg + Levosulpride 75mg Tablets

RABEPRAZOLE

- To fastest acting PPI thus fast relief from symptoms
- Potent PPI provides 99% inhibition of proton pump thus maximum suppression of acid release is achieved

LEVOSULPRIDE

- The new prokinetic agent, demonstrates greater central antidopaminergic activity, antiemetic and antidyspeptic effects
- Provides better relief from overall symptoms thus ensures better quality of life to patients

- Irritable Bowel Syndrome
- GERD
- Heart Burn
- Duodenal Ulcer

POWERFUL ANTIBIOTIC WITH HIGH EFFICACY & SAFETY



Unibact-OTM
Cefixime 200 mg + Ofloxacin 200 mg Tablets

SMASH DOWN TOUGH INFECTIONS

Unibact-OTM

Cefixime 200 mg + Ofloxacin 200 mg Tablets

CEFIXIME

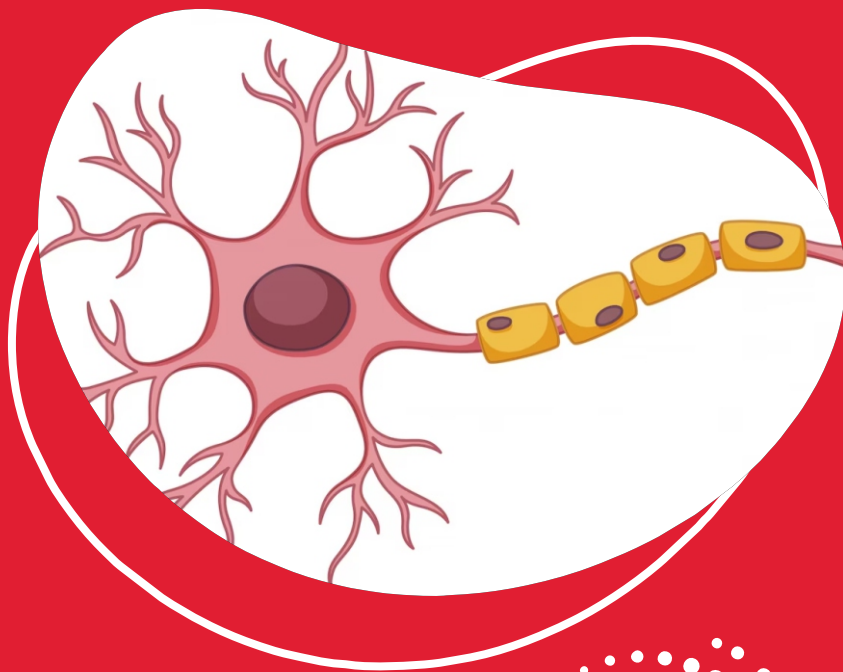
- Possesses broad spectrum of activity against Gram +ve and Gram -ve bacteria
- Highly resistant to beta lactamase degradation
- Possesses long elimination half-life leading to high patient compliance

OFLOXACIN

- Penetration into body tissues & fluids is highly efficient
- Absorption is unaffected by food intake
- Highly active against Staphylococcus aureus, Streptococcus, E coli, Pneumoniae, Streptococcus Pyogenes, Pseudomonas Aeruginosa

- Typhoid Fever
- Nosocomial Infections
- Surgical Prophylaxis
- Intra - Abdominal Infections

EFFECTIVE RELIEF IN NEUROPATHIC PAIN



NERVIPAINTM NT
Pregabalin 75mg + Nortryptline 10mg Capsules

ERADICATES PAIN & GUARDS RELIEF

NERVIPAINTM NT

Pregabalin 75mg + Nortryptline 10mg Capsules

PREGABALIN

- Blocks Ca** Channels in ascending pain pathway
- Improve mood & reduces sleep disturbance
- Pain & Paraesthesia improvement

NORTRYPTLINE

- Blocks NE & 5HT reuptake in descending pain pathway
- Sleep & Mood Improvement
- Superior to Amitriptyline

**Added Action,
Improved Compliance**

- Spondylitis
- Sciatica / PIVD
- Chronic Low Back Pain
- Diabetic Neuropathy

intsia[®]
PHARMA

WHEN
SEVERE ACIDITY
NEEDS URGENT CONTROL



OD-ESO™ 40
Esomeprazole 40mg Tablets

SURE & EFFECTIVE
ANTI-ULCER THERAPY

OD-ESO™ 40
Esomeprazole 40mg Tablets

ESOMEPRAZOLE

- Possesses high potency in acid inhibition than other PPI's
- Successfully treat erosive esophagitis & symptoms of GERD
- Provides better control of reflux symptoms in chronic gastritis
- Provides complete relief in chronic heart burn
- Proton pump (H⁺, K⁺ ATPase) inhibitor
- Neutralizes gastric acid secretion

- Chronic Gastrities
- GERD
- Heart Burn
- Duodenal Ulcer
- Zollinger Ellison Syndrome

PAIN
CAN BECOME A DRAG



MaxopainTM

Aceclofenac 100mg + Paracetamol 325 mg Tablets

DOUBLE POWERED TO **TAKE ON PAIN**

MaxopainTM

Aceclofenac 100mg + Paracetamol 325 mg Tablets

ACECLOFENAC

- Superior overall efficacy than Diclofenac (85% vs 76%)
- Possesses superior GI Tolerability as compared to other NSAIDs
- Efficiently reduces duration of Morning Stiffness in Osteoarthritis

PARACETAMOL

- Well tolerated with no adverse gastrointestinal effects
- Paracetamol well known antipyretic & Analgesic
- Maintains Analgesic & Anti-inflammatory Action for a longer time

- Osteoarthritis
- Low Back Pain
- Dental Pain
- Gynaecological Pain
- Inflammatory Conditions of ENT

IN COLD & FEVER ASSOCIATED
WITH **NASAL CONGESTION**



Insta COLDTM

Paracetamol + Phenylephrine HCL,
Diphenhydramine HCL + Caffeine Tablets

TOTAL RELIEF IN **COLD & FEVER**

Insta COLDTM

Paracetamol + Phenylephrine HCL,
Diphenhydramine HCL + Caffeine Tablets

DIPHENHYDRAMINE

- It is an antihistamine used in the treatment of allergies & relieve cold & cough caused by minor throat or airway irritation.

PHENYLEPHRINE

- Relieves sinus congestion and pressure works by reducing swelling of the nasal passages.

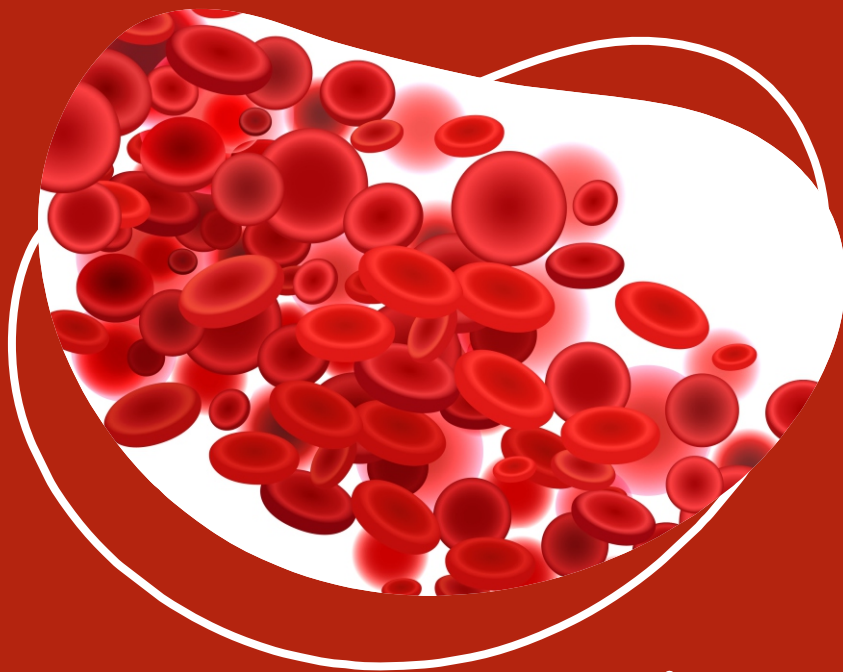
PARACETAMOL

- Analgesic and antipyretic causes less gastric irritation and is generally less toxic.

CAFFEINE

- Stimulating the central nervous system
- Seasonal Allergic Rhinitis
- Common Cold & Allergies
- Sinus & Nasal Congestion
- Upper Respiratory Allergies
- Body Ache & Hay Fever

IRON DEFICIENCY IN PREGNANCY AND GENERAL ANEMIA



HB-PINKTM

Ferric Ammonium Citrate 160mg + Folic Acid 1mg +
Cyanocobalamin 7.5mcg + Zinc Sulphate 30mg +
Copper Sulphate 50mcg +
Sodium Selenite 50mcg

SYRUP

STRONG IRON SUPPORT FOR HEALTHY LIFE

HB-PINKTM

Ferric Ammonium Citrate 160mg + Folic Acid 1mg +
Cyanocobalamin 7.5mcg + Zinc Sulphate 30mg +
Copper Sulphate 50mcg +
Sodium Selenite 50mcg

SYRUP

FERROUS ASCORBATE

- Produces rapid replenishment of tissue Iron stores undergoes high absorption compared to Ferrous Sulphate
- No GI irritation or interaction with food occurs

FOLIC ACID

- Meets the increased demand during pregnancy strengthens foetoneural tube
- Vital for the maintenance of health nervous system and in the formation of red blood cells

ZINC SULPHATE

- Vital for foetal development
- Promotes bone mineral density

- Offers excellent absorption
- Pregnancy & Lactation
- Safe for long term use
- Ensures healthy rise in Haemoglobin levels

WHEN
**PAIN, FEVER &
INFLAMMATION**

NEEDS TO BE TREATED AT ONCE



Maxopain™ SP

Paracetamol 325 mg + Aceclofenac 100mg + Serratiopeptidase 15mg Tablets

ELIMINATES **BARRIERS**, ENHANCES **RELIEF**

Maxopain™ SP

Paracetamol 325 mg + Aceclofenac 100mg + Serratiopeptidase 15mg Tablets

ACECLOFENAC

- Well known antipyretic and analgesic
- Relives mild to moderate body pain

PARACETAMOL

- Directly inhibits PGE2 secretion at the site of inflammation
- Stimulates the synthesis of the extracellular matrix of human articular cartilage
- An NSAID with greater COX-2 Specificity when compared to Diclofenac Sodium

SERRATIOPEPTIDASE

- Time tested anti-fibrinolytic, anti-oedemic agent

- Tooth Extraction
- Sports Injuries
- Sprains / Fractures
- Trauma / Surgery
- Post Operative Edema

FOR
**MUSCULAR SPASM &
EXCRUCIATING PAIN**



Maxopain™ MR

Paracetamol 325 mg + Aceclofenac 100mg + Chlorzoxazone 250mg Tablets

KNOCK OUT SPASM, INFLAMMATION & PAIN

Maxopain™ MR

Paracetamol 325 mg + Aceclofenac 100mg + Chlorzoxazone 250mg Tablets

ACECLOFENAC

- Powerful Anti prostaglandin & Peripheral analgesic action
- Rapid relief from Pain and Inflammation

PARACETAMOL

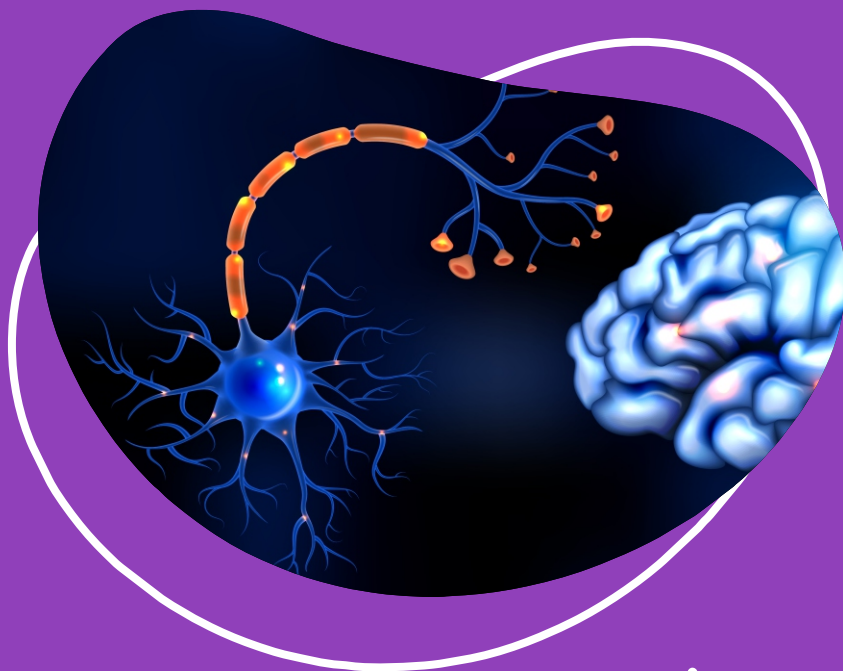
- Strong CNS pain relieving action work in synergy with Aceclofenac
- Relives mild to moderate body pain
- An NSAID with greater COX-2 Specificity when compared to Diclofenac Sodium

CHLORZOXAZONE

- Power packed muscle relaxant action Trusted for over 25 Years

- Acute Disc Prolapse
- Low Back Pain
- Sprains / Fractures
- Trauma / Surgery
- Muscular Spasm

IN PAINFUL
NEUROPATHIC
CONDITION RECOMMEND



NERVIPAINTM MC

Pregabalin 75mg + Methylcobalamin 75mcg Capsules

NEUROPROTECTOR & REJUVENATOR

NERVIPAINTM MC

Pregabalin 75mg + Methylcobalamin 75mcg Capsules

PREGABALIN

- Pregabalin reduces pain by 72.3% and is well tolerated
- Leads to 30% improves in sleep quality in type-1& type-2 diabetic mellitus
- Pregabalin is recommended in label A therapy in American Academy of Neuropathy

METHYLCOBALAMIN

- Helps in nerve rejuvenation
- Helps in pain relief Diabetic Peripheral Neuropathic Pain
- Helps in post herpetic myalgia & Post operative pain

- Chronic Low Back Pain
- Diabetic Neuropathic Pain
- Post Operative Pain
- Drug-Induced Nerve damage
- Peripheral Neuropathy

TO PROTECT THE **HEART IN UNCONTROLLED HYPERTENSION** RECOMMEND



T-HEART™ 40
Telmisartan 40mg Tablets

THE **SMART CHOICE** IN THE MANAGEMENT OF
HYPERTENSION & CARDIAC ARREST
REDUCTION

T-HEART™ 40
Telmisartan 40mg Tablets

TELMISARTAN

- Shows peculiar features that go beyond blood pressure control
- Confers cardiovascular protective effects similar to those of Ramipril, but with a better tolerability
- Provides 24-h sustained reduction of blood pressure
- Large volume of distribution due to its high lipophilicity
- Longest half life (24 hrs) compared to other ARB's ensures long duration of action
- It is effective in reduction of BP & It provides end organ protection
- It is more reliable among all ARBS

- Hypertension
- Angina Pectoris
- Edema in Hypertensive
- Myocardial Infarction
- Coronary Heart Disease

PROTECT FROM
HEART HYPERTENSION



T-HEARTTM AM
Telmisartan 40mg + Amlodipine 5mg Tablets

HYPERTENSION FREE
HEALTHY HEART

T-HEARTTM AM
Telmisartan 40mg + Amlodipine 5mg Tablets

TELMISARTAN

- It shows equal benefits in composite endpoint of CV death, MI, Stroke, CHF hospitalization & organ protection
- It has lower rates of cough & angioedema, hence lesser side effects & better tolerated than ramipril

AMLODIPINE

- Gradual onset of therapeutic action
- No fluctuations in B.P
- Control during vulnerable morning hours
- Spares sudden cardiac episode or myocardial ischemia

- Hypertension
- Angina Pectoris
- Edema in Hypertensive
- Myocardial Infarction
- Coronary Heart Disease

HYPERTENSION FREE HEALTHY LIFE WITH



FOR INDIVIDUALIZED **CARDIAC CARE**



CILNIDIPINE

- Blocks the action of calcium on the heart and blood vessels
- Relaxes blood vessels & heart beats with less force
- Lower the blood pressure & protects the heart following a heart attack

TELMISARTAN

- Relaxes blood vessels which lowers the blood pressure
- Reduces the workload of the heart

- High Blood Pressure
- Heart Failure
- Heart Attack
- Diabetic Kidney Disease
- Hypertension

IN MANAGEMENT OF
HYPERTENSION
RECOMMEND



C-HEARTTM **10**
Cilnidipine 10mg Tablets

ENHANCES **QUALITY OF LIFE**

C-HEARTTM **10**
Cilnidipine 10mg Tablets

CILNIDIPINE

- An anti hypertensive with pleiotropic effects like renoprotective neuroprotective and cardioprotective effects etc.
- Improves left ventricular diastolic function in patients with hypertensive hearts disease
- Significantly reduces 24 hours urinary catecholamines in hypertensive patients with type 2 diabetes and thereby may improve insulin resistance
- Maintains cerebral blood flow

- Hypertension & Cardiovascular Disease
- Renal Disease
- Diabetes Mellitus
- Coronary Heart Disease

PUT A PAUSE TO
INVADING PATHOGENS



MACROTOP - AZ

250
500

Azithromycin Tablets

THE **WINNER PERFORMER**

MACROTOP™ - AZ

250
500

Azithromycin Tablets

AZITHROMYCIN

- Highly effective against Betalactamase producing H. Influenza, S. Aureus, M. Catarrhalis
- High Ear Fluid & Sinus Fluid Concentraion
- High & sustained Concentraion in Inflammed Skin & Soft Tissues
- Ensures Predictable Eradication of common Pathogens

Tough
INFECTIONS Need
Tough ANTIBIOTICS

- Sinusitis
- Eye Infections
- Pharyngitis & Tonsillitis
- Pneumonia & Bronchitis
- Urinary tract infections

intsia
PHARMA

FOR
**SMOOTH HEALING &
ASSURED RELIEF**



SucraTOP-OTM
Sucralfate 1gm + Oxetacaine 20mg/10ml Suspension

EASY CHOICE TO EASE ULCERATION

SucraTOP-OTM

Sucralfate 1gm + Oxetacaine 20mg/10ml Suspension

SUCRALFATE

- Cytoprotective Agent
- Coats the ulcer creator & forms the protective layer
- Prevents further injury to gastric mucosa by acid, pepsin
- Stimulates gastric mucus & bicarbonate secretion

**Promote Gastric
Cytoprotective**

OXETACAINE

- A local Anaesthetic agent
- Produces a reversible loss of sensation
- Eradicates abdominal discomfort, bloating, fullness & pain

Therapeutic implications of

SucraTOP-O
suspension

- Gastric Ulcer
- Stress Ulcer
- GERD
- Duodenal Ulcer
- Gastritis

**The Dependable
Choice For
Acidity
And
Ulcer Pain**



A COMBINATION THAT
ASSURES SAFETY
AGAINST PROTECTION



INSIMOX-CVTM 625

Amoxicillin 500 + Potassium Clavulanate 125 Tablets

A **VERSATILE EFFECTIVE**
COMBINATION
FOR COMPLETE PROTECTION

INSIMOX-CVTM 625

Amoxicillin 500 + Potassium Clavulanate 125 Tablets

AMOXYCILLIN

- Offers wide coverage against both gram +ve & gram -ve pathogens
- Achieves peak serum levels (Between 1 to 2 Hrs)
- Better absorption as compared to other penicillin antibiotics

CLAVULANIC ACID

- Inactivates & irreversibly Inhibits variety of beta-lactamases
- Extent the antibacterial act on of Amoxicillin
- Protects Amoxicillin from hydrolysis
- A versatile effective combination for complete protection

- Bronchitis, RTI
- Acute Tonsilitis, UTI
- Gynecological Infections
- Post Surgical Infections

OPT FOR THE
RIGHT THERAPY
IN **GERD**



Rx
OD-PAN™ 40
Pantoprazole 40mg Injection



COOL DOWN PPI WITH PERFECTION

Rx
OD-PAN™ 40
Pantoprazole 40mg Injection



PANTOPRAZOLE

- Superior anti secretory activity than Omeprazole
- Longer Duration of Action than Omeprazole, Lanzoprazole & Rabeprazole.
- Non interference with excretion of other drugs

**A COOL
way to treat
BURNING Conditions**

- GERD and erosive esophagitis
- Duodenal Ulcer
- Gastric Ulcer
- Flautunence
- Zollinger - Ellison Syndrome

SOLUTION OF GLYCERIN & SODIUM CHLORIDE



Rectovac™

Solution of Glycerin 15% w/v + Sodium Chloride 15% w/v

ENEMA

FOR EASY EVACUATION

Rectovac™

Solution of Glycerin 15% w/v + Sodium Chloride 15% w/v

ENEMA

BENEFITS

- Sodium Chloride breaks the hardening of stool and Glycerin Softens
- Easy administration for evacuation
- Adequate liquid has been provided

During constipation
for all age group

HIGHLIGHTS

- Glycerin Sodium Chloride of Solution
- Easy to squeeze for better compliance
- No cutting of Nozzle, No sharpness of tip
- Smooth tip for no chances of anal injury (while other brands have to cut or break the nozzle which causes sharpness of nozzle creates

Prior to
Surgery and Delivery
in Hospital



Direction for use:



Patient should lie in left-lateral position with legs flexed at the knee and hip joints.

MODE OF APPLICATION:

Remove cap and connect the applicator by screwing properly and lubricate the applicator with small quantity of **Rectovac** solution.

Gently insert the well lubricated applicator into the anal opening and squeeze the container till the solution is emptied into the rectum. withdraw the applicator and dispose off the container.

Note-If necessary, before insertion the Rectovac may be warmed slightly to body temperature on a water bath.

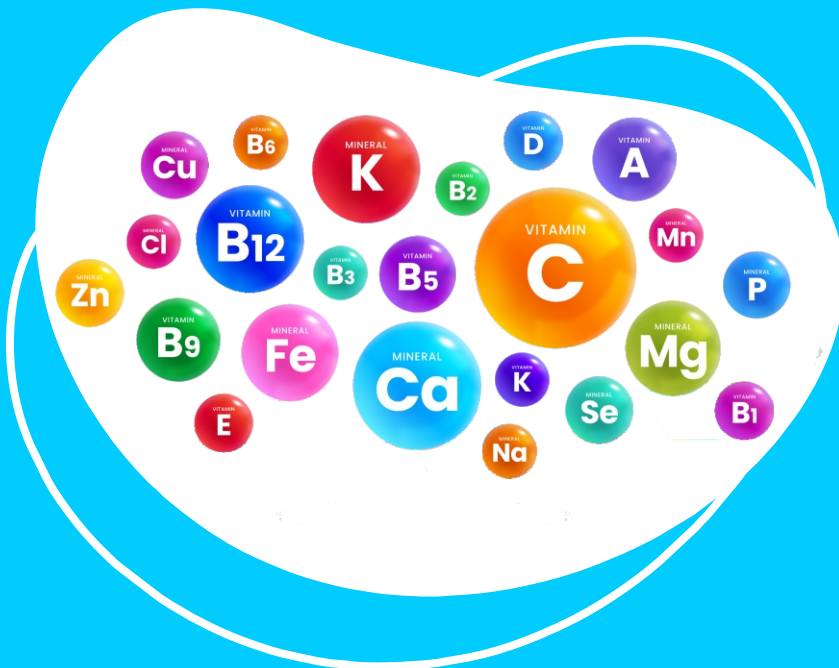


As directed by the Physician.
Administration in Children:

**Intsia**
PHARMA

HIGH PROTEIN, MINERALS, RICH VITAMINS

POWER TO BOOST IMMUNITY GROWTH OF YOUR FAMILY



AN EVERYDAY NUTRITIONAL SUPPLEMENT



Net Weight 250g.

NUTRITIONAL INFORMATION (* Approximate Values)			
NUTRIENTS	Each 300g	Each 30g	
		Units	%RDA
Energy	383.4	Kcal	115.02
Total Carbohydrate	89.7024	g	26.91
Carbohydrates from Sugar	65	g	19.5
Protein (20%)	20	g	6
Fat	0.964	g	0.29
Saturated Fats	0.556	g	0.17
VITAMINS			
Vitamin B1	3.33	mg	0.90
Vitamin B2	3.66	mg	1.1
Niacinamide	40	mg	12
Vitamin B12	1.6	mcp	0.48
Pantothenic acid	3.33	mg	1
Vitamin D	300	IU	90
Vitamin B6	1.6	mg	0.48
Folic acid	760	mcg	99
Vitamin C	30	mg	24
MINERALS			
Manganese	2.5	mg	0.75
Iron	12	mg	3.6
Copper	1.6	mg	0.48
Calcium	1.616	mg	0.485
Phosphorous	1.266	mg	0.38
DHA (10%)	25	mg	7.5

*% RDA Calculated basis ICMR guidelines for Pregnant Women.
Appropriate overages of Vitamins are added to compensate losses during storage.

CONTAINS ADDED NATURE IDENTICAL AND ARTIFICIAL FLAVORINGS SUBSTANCES VANILLA
 *Contains Soya Protein, not recommended for people allergic to soya.
 Store in a cool, dry place, protected from moisture and direct sunlight.
 Keep the container tightly closed.
 Do not introduce wet spoon into the container.

How to make a delicious beverage with

- 1 Take a mug of Luke warm or cold milk* (200ml).
- 2 Add 2-3 tablespoons (25g) of V3 DHA
- 3 Stir well before drinking

BEST USE BEFORE 18 MONTHS FROM THE MONTH OF MANUFACTURING



This package is sealed in weight. Use as directed. For more information, please refer to the product packaging and labeling. KEEP CONTAINER CLOSED TO AVOID MOISTURE & AIR EXPOSURE. Health Supplement should not be substituted for a normal diet. Use within 15 days after opening the container.

Everyday Nutrition



V3 DHA
ADVANCED Nutritional Supplement

PREGNANCY & LACTATION

with antioxidant that Delay Ageing factor

V3-DHA Provides Calcium that strengthen bones
Folic Acid and Zinc ensures proper foetal development
Iron to help prevent anaemia

V3 DHA
ADVANCED Nutritional Supplement

GROWING CHILDREN

Calcium Strong bones.
Vitamins & Minerals for better activated & development
Carbohydrates for instant energy.

V3 DHA
ADVANCED Nutritional Supplement

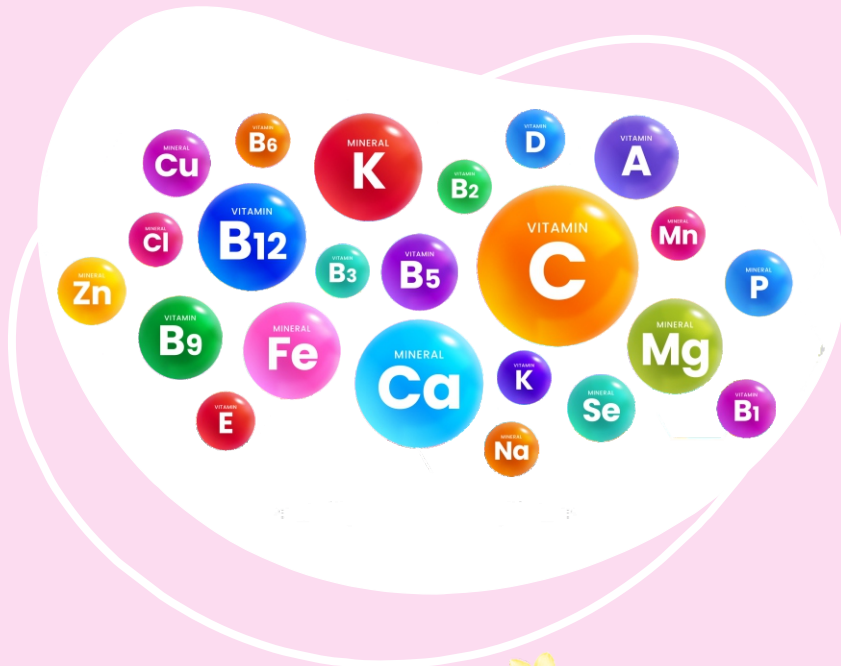
Elderly Persons
V3-DHA maintains the nutritional Anti-oxidant for increased activity or R.B.C.

Elderly Persons
Add 2 tablespoonsful (approx. 15g) V3-DHA into 200ml



HIGH PROTEIN, MINERALS, RICH VITAMINS

POWER TO BOOST IMMUNITY GROWTH OF YOUR FAMILY



AN EVERYDAY NUTRITIONAL SUPPLEMENT



Net Weight 250g.

NUTRITIONAL INFORMATION (* Approximate Values)			
NUTRIENTS	Each 100g	Units	Each 30g (Per Serving) %RDA
Energy	383.4	Kcal.	115.02
Total Carbohydrate	89.7024	g.	26.91
Carbohydrates from Sugar	0	g.	0
Protein (20%)	20	g.	6
Fat	0.964	g.	0.29
Saturated Fats	0.556	g.	0.17
VITAMINS			
Vitamin B1	3.33	mg.	0.90 56%
Vitamin B2	3.66	mg.	1.1 55%
Niacinamide	40	mg.	12 66%
Vitamin B12	1.6	mcg.	0.48 40%
Pantothenic acid	3.33	mg.	1 20%
Vitamin D	300	IU	90 15%
Vitamin B6	1.6	mg.	0.48 19%
Folic acid	760	mcg.	228 40%**
Vitamin C	80	mg.	24 30%
MINERALS			
Manganese	2.5	mg.	0.75 18%
Iron	12	mg.	3.6 10%
Copper	1.6	mg.	0.48 28%
Calcium	1,616	mg.	120 48.50%
Phosphorous	1,216	mg.	0.39 38%
DHA (10%)	25	mg.	7.5

* % RDA Calculated basis ICMR guidelines for Pregnant Women.
Appropriate overages of Vitamins are added to compensate losses during storage.
Ingredients: Defatted Soy Flour, Skimmed Milk Powder, Maltodextrin, Di-basic Calcium Phosphate, Cyanocobalamin, Thiamine Mononitrate, Riboflavin, Niacinamide, Pantothenic acid, Pyridoxine Hydrochloride, Calcium D-Pantothenate, Vitamin D, Folic acid, Ascorbic acid, Ferric Ammonium Citrate, Manganese Sulphate, Copper Sulphate, Preservative (INS 211)

CONTAINS ADDED NATURE IDENTICAL AND ARTIFICIAL FLAVORINGS SUBSTANCES VANILLA
Contains Soya Protein, not recommended for people allergic to soya
Store in a cool, dry place, protected from moisture and direct sunlight.
Keep the container tightly closed.
Do not introduce wet spoon into the container.

- How to make a delicious beverage with
-
- 1 Take a mug of Luke warm or cold milk* (200ml).
 - 2 Add 2-3 tablespoons (25g) of V3 DHA
 - 3 Stir well before drinking

BEST USE BEFORE 18 MONTHS FROM THE MONTH OF MANUFACTURING



Everyday Nutrition



V3 DHA
ADVANCED Nutritional Supplement

with antioxidant that Delay Ageing factor

PREGNANCY & LACTATION

V3-DHA Provides Calcium that strengthen bones
Folic Acid and Zinc ensures proper foetal development
Iron to help prevent anaemia

V3 DHA
ADVANCED Nutritional Supplement

GROWING CHILDREN

Calcium Strong bones,
Vitamins & Minerals for better activated & development
Carbohydrates for instant energy.

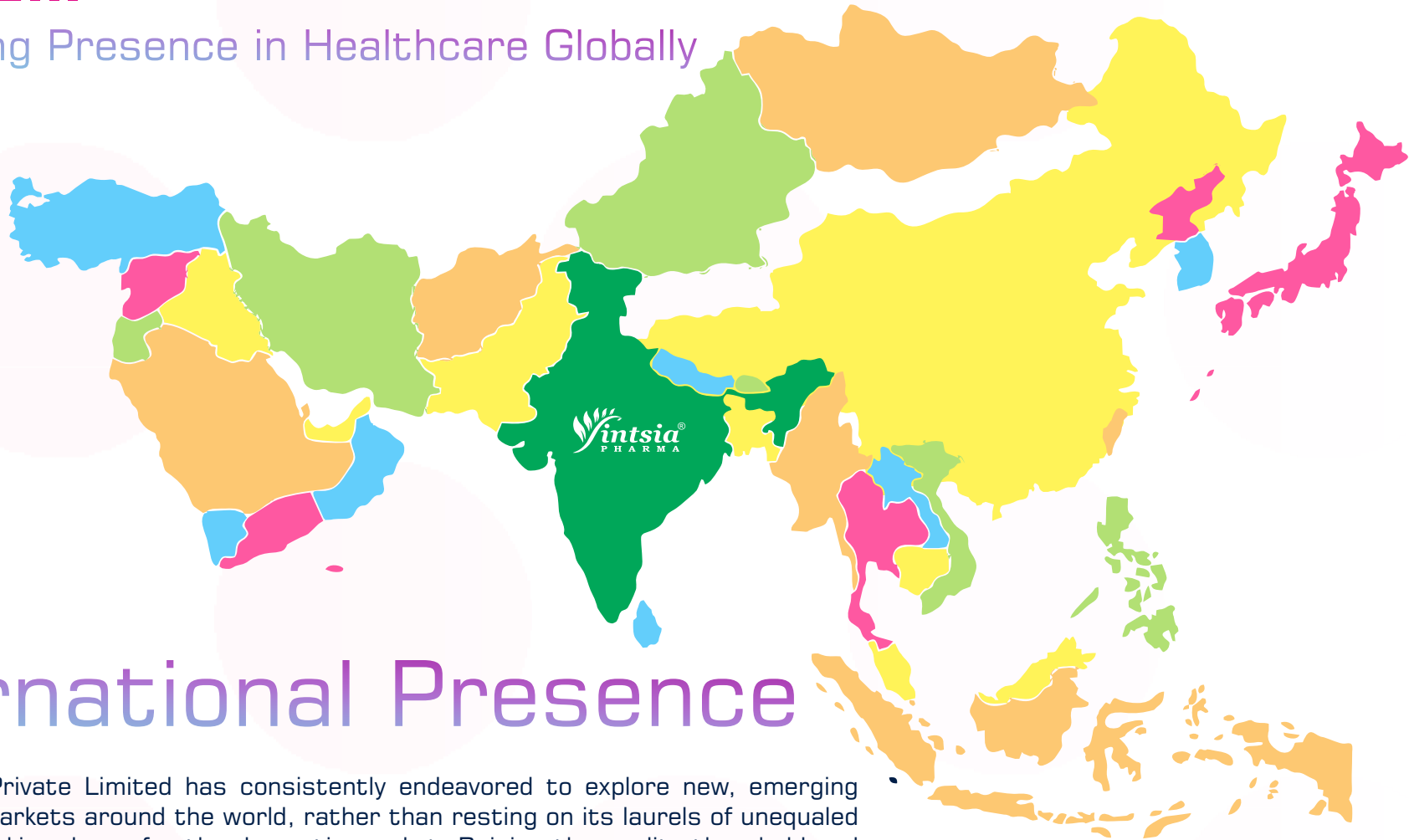
V3 DHA
ADVANCED Nutritional Supplement

Elderly Persons
V3-DHA maintains the nutritional Anti-oxidant for increased activity of R.B.C.

Elderly Persons
Add 2 tablespoonsful (approx. 15g)
V3-DHA into 200ml



Marking Presence in Healthcare Globally



International Presence

Intsia Pharma Private Limited has consistently endeavored to explore new, emerging and developed markets around the world, rather than resting on its laurels of unequalled proficiency in making drugs for the domestic market. Raising the quality threshold and meeting the stringent requirements of foreign drug regulatory authorities has allowed excursions into numerous ROW markets.

Our aim of supporting humanity in living well is not restricted to our home market, so we are continually looking for ways to broaden the company's reach so that our life-saving drugs can reach as many people as possible at affordable prices.

Deeper penetration into highly regulated areas such as Europe, the GCC, the MENA region, Russia and the CIS countries, Latin America, and WHO-Geneva remains one of our core goals. Intsia Pharma's comprehended quality assurance methodology will make this possible in the near future.

Renewed Definition of Brands

www.intsiapharma.com



Registered Office:

Intsia Pharma Private Limited

No. 43, First Floor, Balandeeswarar Kovil Street,
Mangadu, Chennai - 600 122.

Tamilnadu, India.     

 044 3568 1487  99 40 57 57 14

E-mail: info@intsiapharma.com | **URL:** www.intsiapharma.com

®Registered Trademark



TRUST IS BUILT WITH CONSISTENCY